

Redesigning child care to promote education, support families and build communities

Joan Lombardi, Moderator

SEPTEMBER 17 2018



This session....

- **Principles driving community initiatives**
- **Community wide efforts across the country**
- **Introduction of the panel**

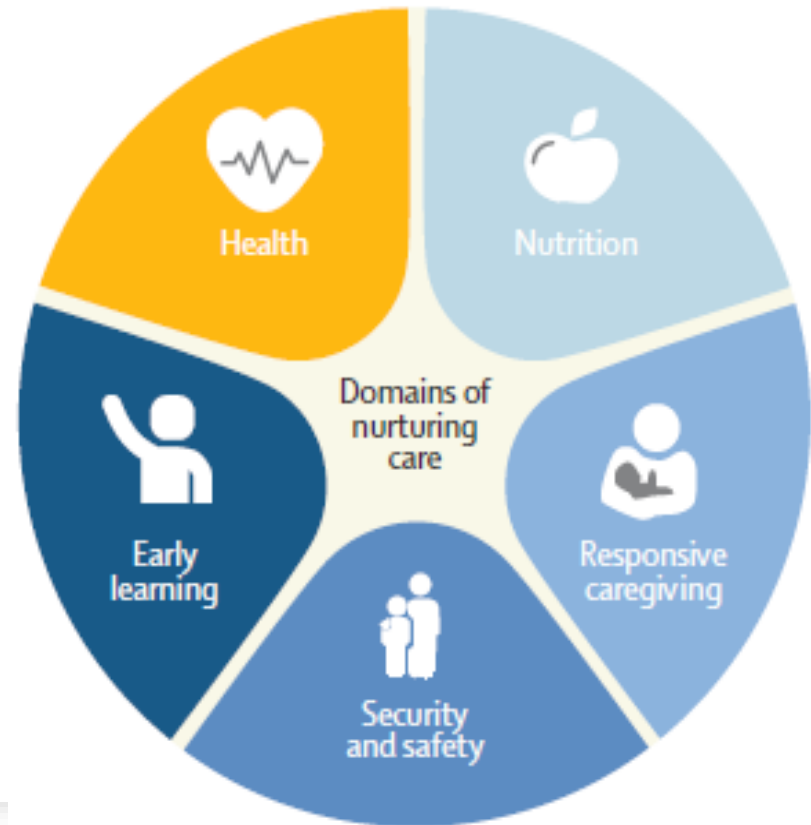


The early years matter!



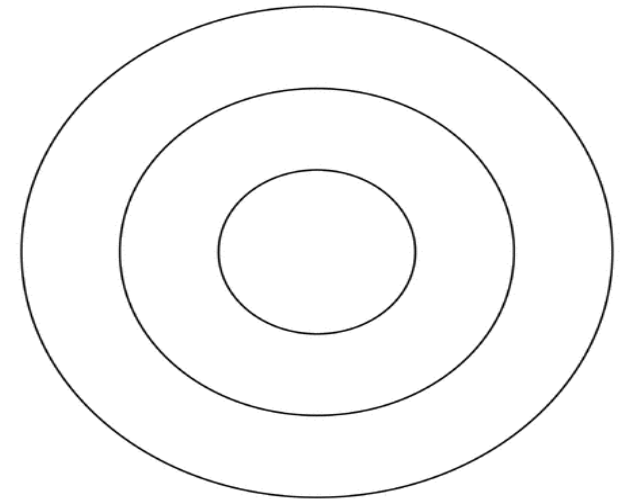
The domains of development are integrated: therefore a system has to address the holistic needs of children

- Social
- Emotional
- Physical
- Cognitive
- Language



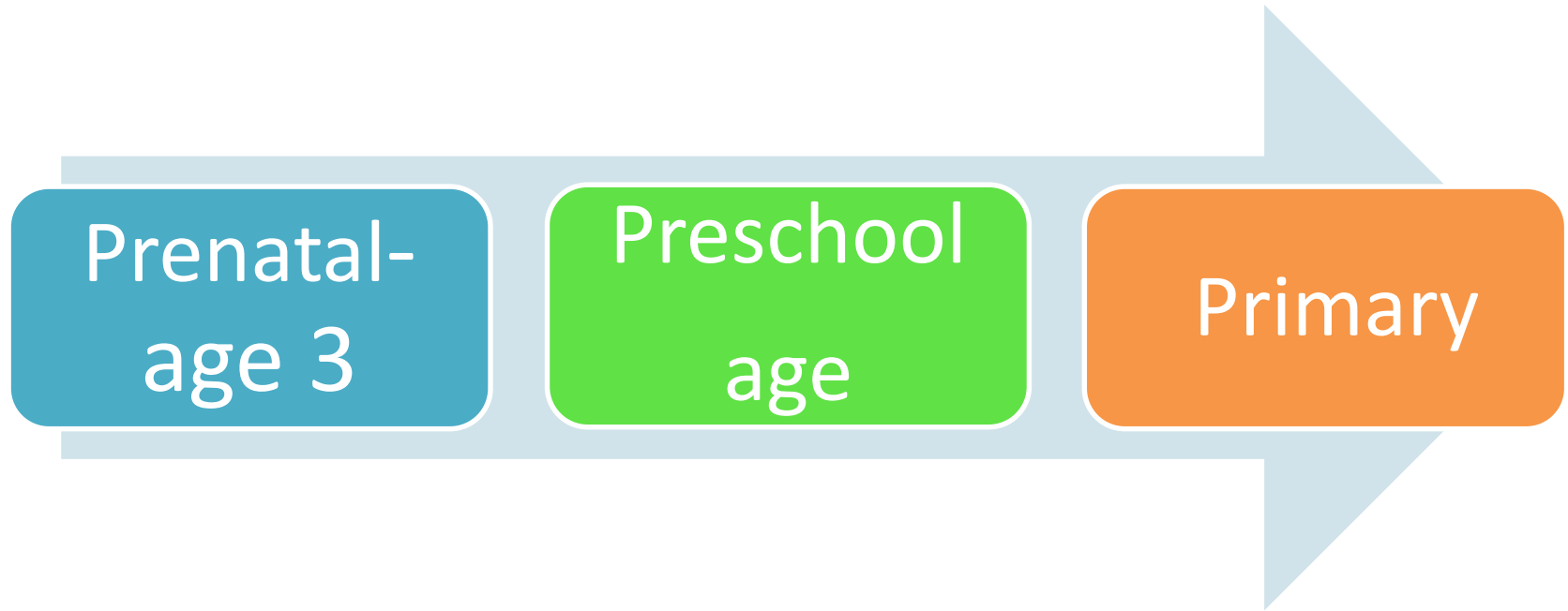
The family and community as system of support for young children

Children grow up in families
Families live in communities
Communities affected by policies



The Ecology of Child Development
Urie Bronfenbrenner

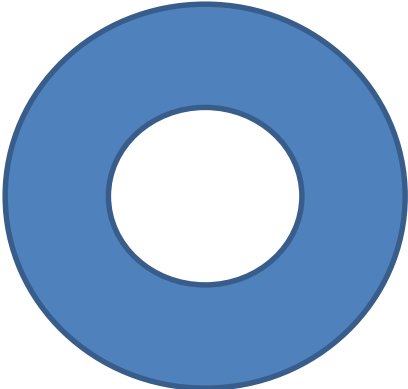
**One period of development builds on another-
a life course approach to system**



Place based strategies: What's the buzz?



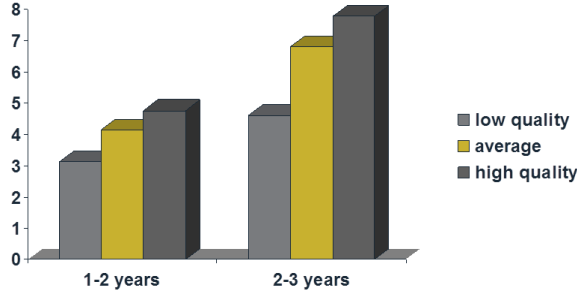
Infrastructure



Coordination/Leadership



Civic engagement



Data system



Financing

Services and supports



Health access



Family support and Connection



Hub for quality child care



Linkages to schools

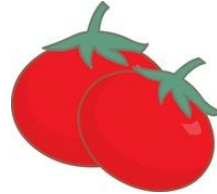
Community Climate



Social Networks



Green play spaces



Healthy food



**Community and Family Economic
Development and Affordable Housing**



Safe neighborhoods

Out with the old...in with the **bold!**

- Learning begins at school or preschool
 - Focus on children or families
 - Health or education
 - States or communities
 - Policy development from the top
- Learning begins at birth and takes place in child care and other settings
 - Children and families-
 - Health and education
 - States and communities
 - Policy development from the bottom up- engaged citizen action

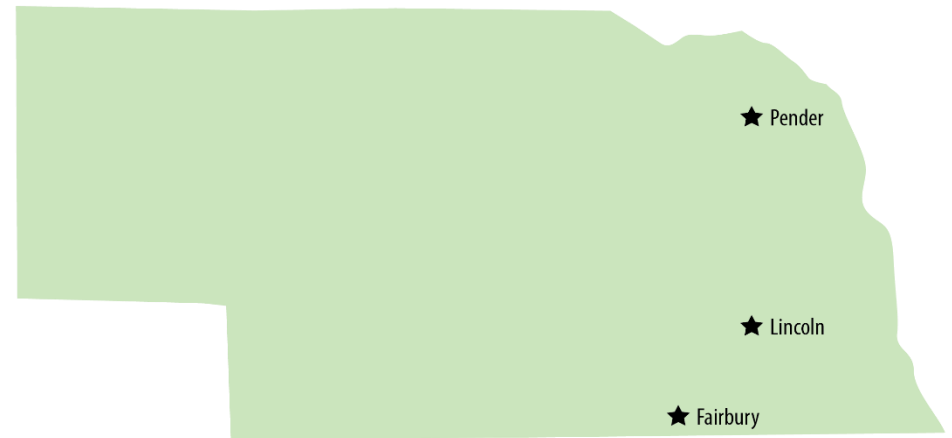
Elements of quality child care



- Safety and hygiene
- Adequate space and age appropriate environment
- Adequate number of staff
- Small groups
- Well prepared and supported staff
- Developmental curriculum and Individualized programming
- Responsive caregivers and reflective supervision
- Continuity of care
- Family engagement and cultural responsiveness
- Connections to family supports
- Nutrition promotion
- Access to health and mental health supports

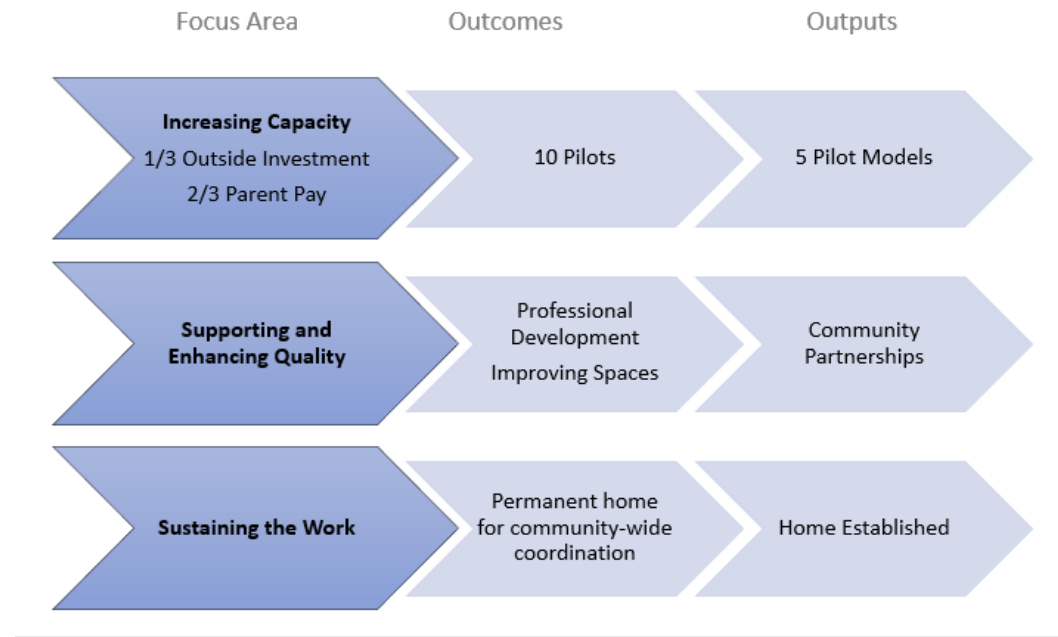
Today's Panel

-
- **Michelle Suarez, Prosper Lincoln**
 - **Megan Garcia, Public Health Solutions, Rooted in Relationships**
 - **Melissa Kelly, Pender Community Hospital**



Prosper
Lincoln—Early
Childhood
Systems
Change

Prosper Lincoln Early Childhood Systems Change
2018-2019





Prosper Lincoln-Impacting Families



CENTRAL

step ahead
early childhood program



LITTLE BEES SPROUTS

Child Development Center



LITTLE SPROUTS
Child Development Center
402-385-6248



