

Buffett
Early Childhood
Institute
at the University of Nebraska

High-Quality Early Care and Education: *What it Means and What it Takes*

September 17, 2018
Kearney, NE

Start early. Start well.



QUALITY

A young child with dark hair, wearing a white headband with a large white flower, is sitting on the floor. The child is wearing a white long-sleeved shirt and is looking directly at the camera with a neutral expression. The background is a blurred crowd of people, suggesting a public event or gathering. The entire image has a purple tint.

The Challenge

What it IS

What it TAKES

Promising Directions

QUALITY

The Challenge...

Why high-quality
early care and
education is
essential...



Nebraska Values Young Children



Nebraska Values Families AND Education



Families in Nebraska Work

75% of children
under 6 have all
available
parents working



KidsCount; Voices for Children Nebraska, 2017

Our local, state, and national prosperity of the future rest on the care and education of young children today

\$\$\$
\$\$\$



\$\$\$
\$\$\$
\$\$\$
\$\$\$
\$\$\$

Investment and Impact

James Heckman, from *Lifecycle Benefits*

High quality birth-to-five programs for
disadvantaged children can deliver a

13%
Return on Investment

Starting earlier provides greater returns. Learn more.

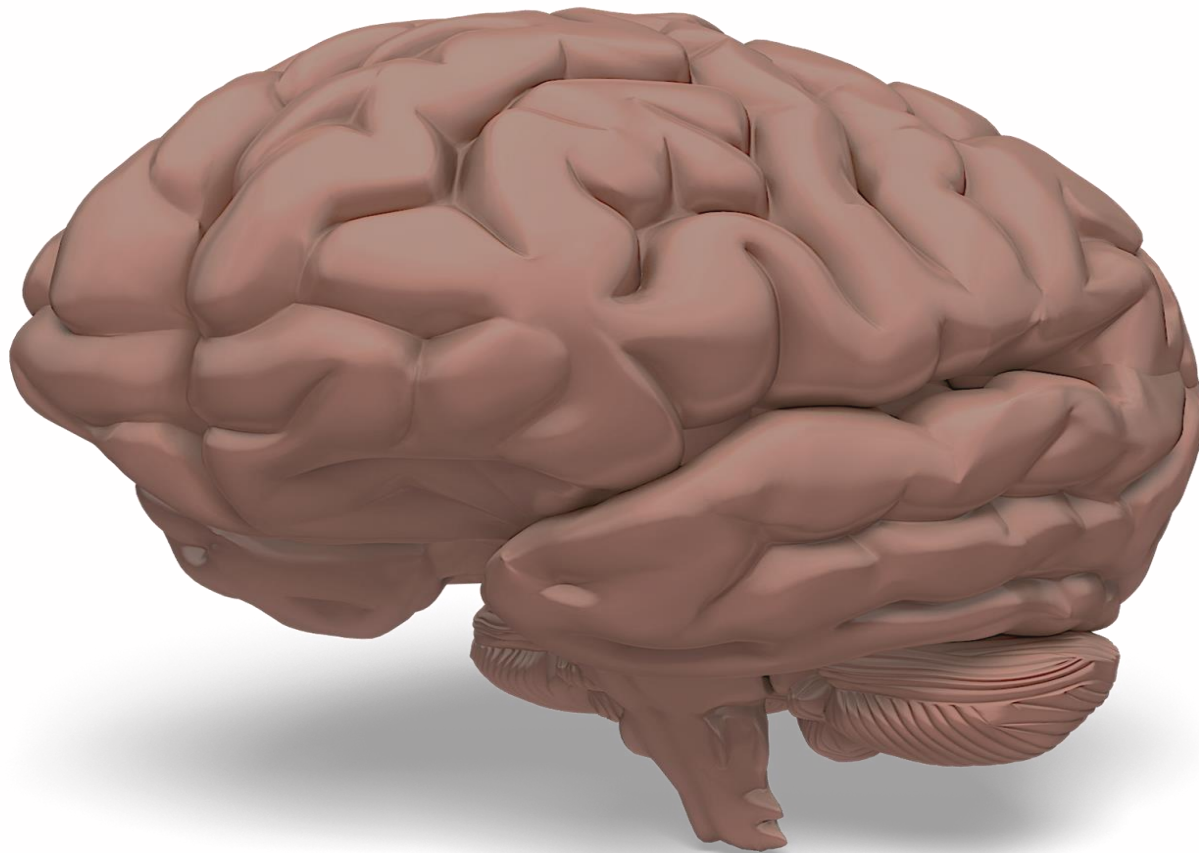
www.heckmanequation.org

QUALITY

What it IS...



Brain Development



Shonkoff & Phillips, 2000

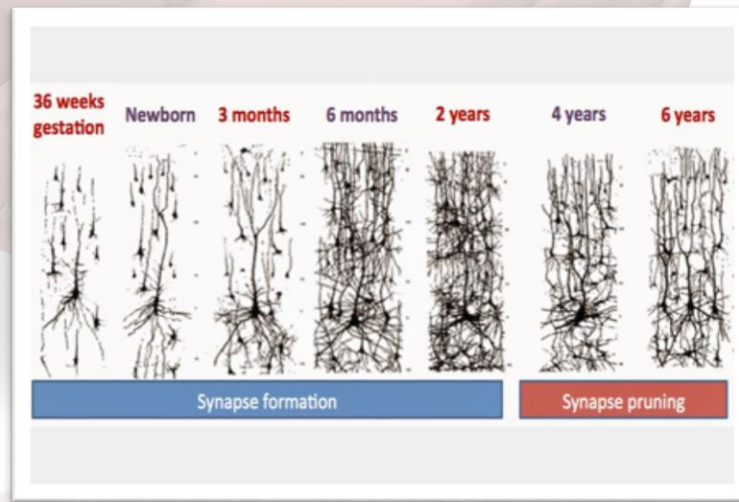
Brain Development




Schore, 2001

Shonkoff & Phillips, 2000

Gunnar, 2009



Serve and Return

A woman with blonde hair, wearing a light grey long-sleeved shirt and black pants, is leaning over a baby. The baby is lying on their back, wearing a red long-sleeved shirt and green pants, and is holding a colorful ball made of interconnected rings. The woman is smiling and looking at the baby. The background is a blurred indoor setting with a yellow cushion and a wooden toy box.

Hello, sweet baby!
Are you ready to play?

Gahhh!



**Quality
=
Serve and Return
Relationships**



QUALITY

What it IS...

Safety – physical and emotional

*Interactions – warm,
1:1, language-rich,
extending*



QUALITY

A young child with dark hair and a white headband with a flower is being held by an adult. The child is looking towards the camera. The entire image has a purple tint.

What it IS...

*Safety and
Relationships*

*SERVE AND
RETURN*



QUALITY


What it TAKES...

Provisions

What it
takes



Serve and Return

A woman with blonde hair, wearing a light grey long-sleeved shirt and black pants, is leaning over a baby. The baby is lying on their back, wearing a red long-sleeved shirt and green pants, and is holding a colorful ball made of interconnected rings. The woman is smiling and looking at the baby. The background is a blurred indoor setting with a yellow cushion and a wooden toy box.

Hello, sweet baby!
Are you ready to play?

Gahhh!

What it
takes



Families



Supportive

Supported

Informed

What it
takes



Interactions

- Frequent
- 1:1
- Warm
- Language-Rich
- Extending



What it
takes



Instruction

- "Whole" Child
- Challenging/
Scaffolded
- Curriculum-based

(Burchinal, 2018)



What it
takes



Program Quality



Family Childcare Homes



Step Up to
Quality



Nebraska's Birth to Five
Learning and Development Standards

**FAMILY CHILD CARE
ENVIRONMENT
RATING SCALE**
REVISED EDITION

Thelma Harms
Debby Cryer
Richard M. Clifford

Home Visiting

Family Strengthening



“For children at risk, early childhood programs are nothing less than a lifeline to success.”

**DR. SAMUEL J. MEISELS,
FOUNDING EXECUTIVE DIRECTOR**

What it takes

Professionals



Early Childhood Professionals:

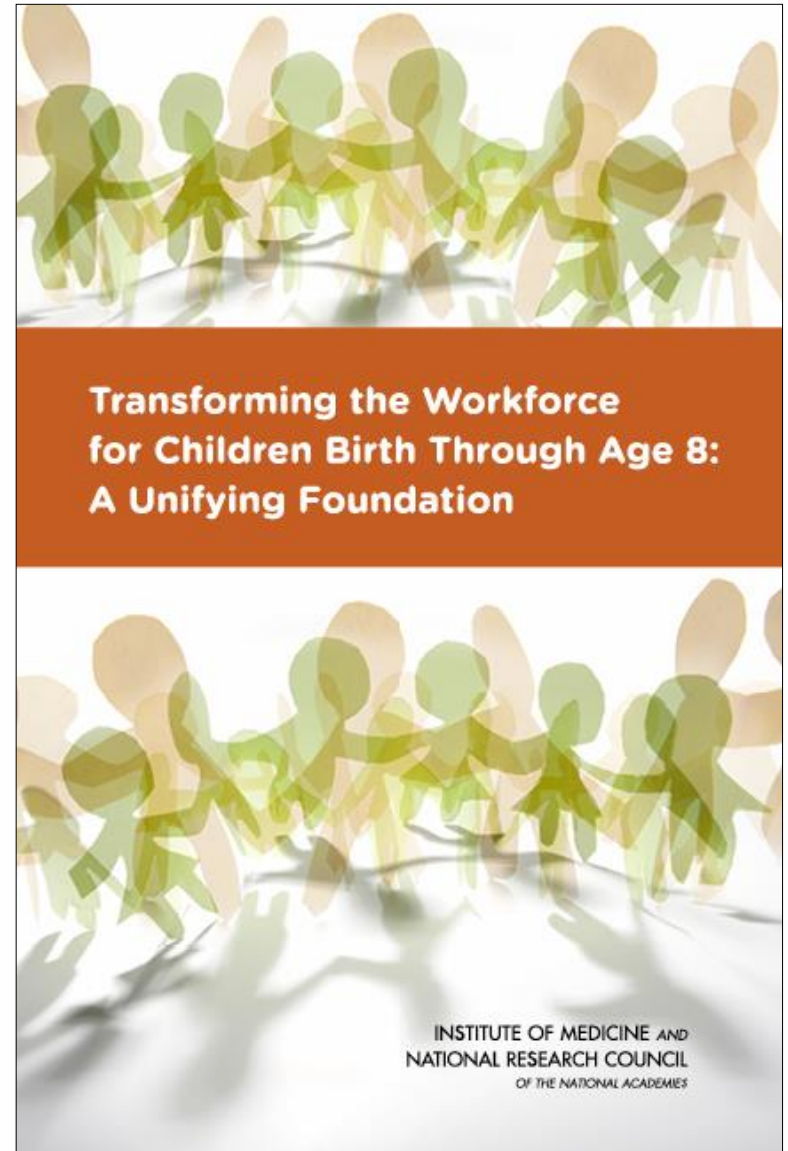
*Skilled, Informed
and Well*



Transforming the Workforce for Children Birth Through Age 8: A Unifying Foundation

www.iom.edu/Birthtoeight

INSTITUTE OF MEDICINE AND
NATIONAL RESEARCH COUNCIL
OF THE NATIONAL ACADEMIES

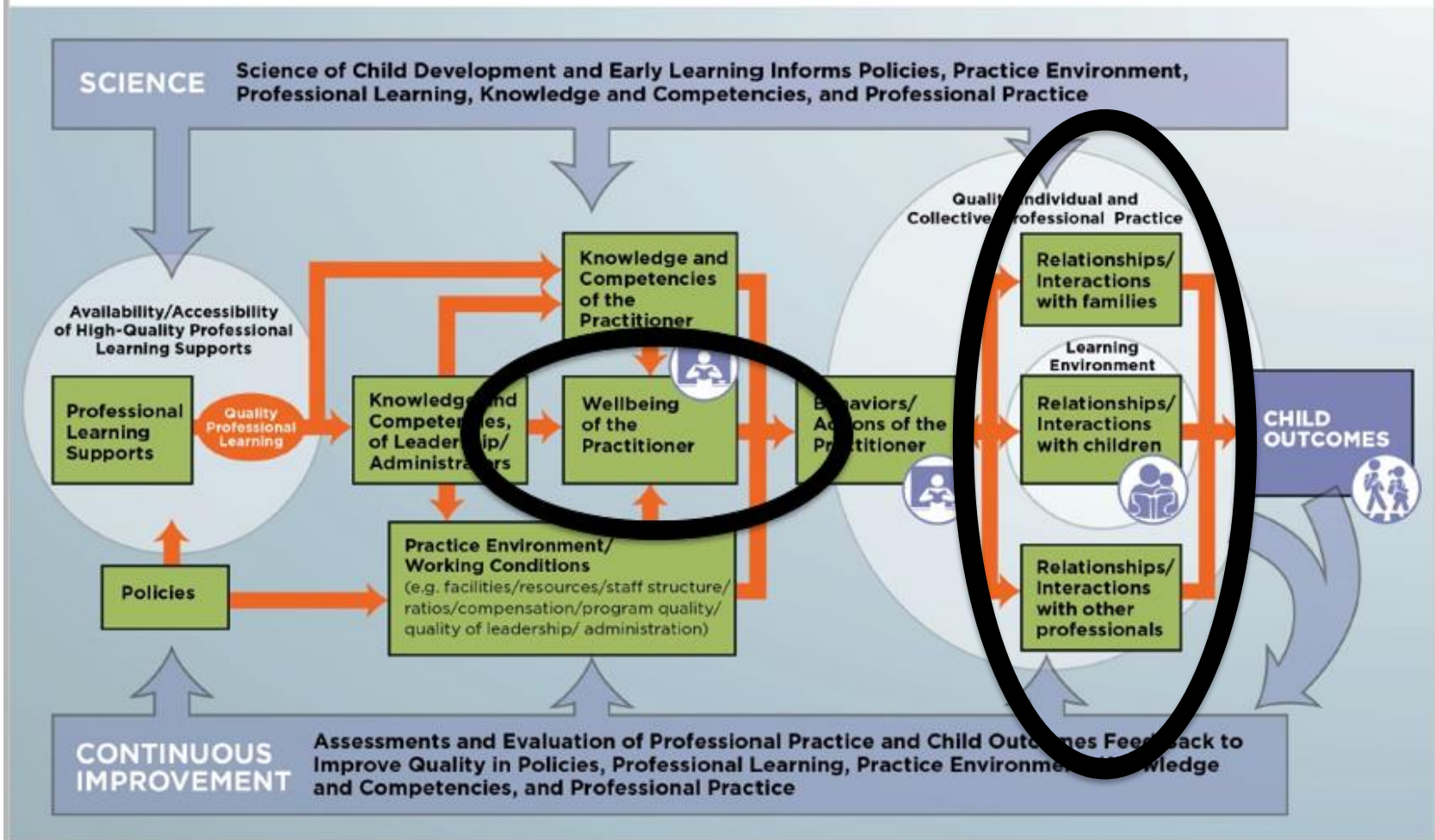


Transforming the Workforce
for Children Birth Through Age 8:
A Unifying Foundation

INSTITUTE OF MEDICINE AND
NATIONAL RESEARCH COUNCIL
OF THE NATIONAL ACADEMIES

Transforming the Workforce

Figure 8-1. Factors that contribute to quality professional practice and ultimately to improving child outcomes.



Nas, 2015

Frontline Servers and Returners



What it
takes

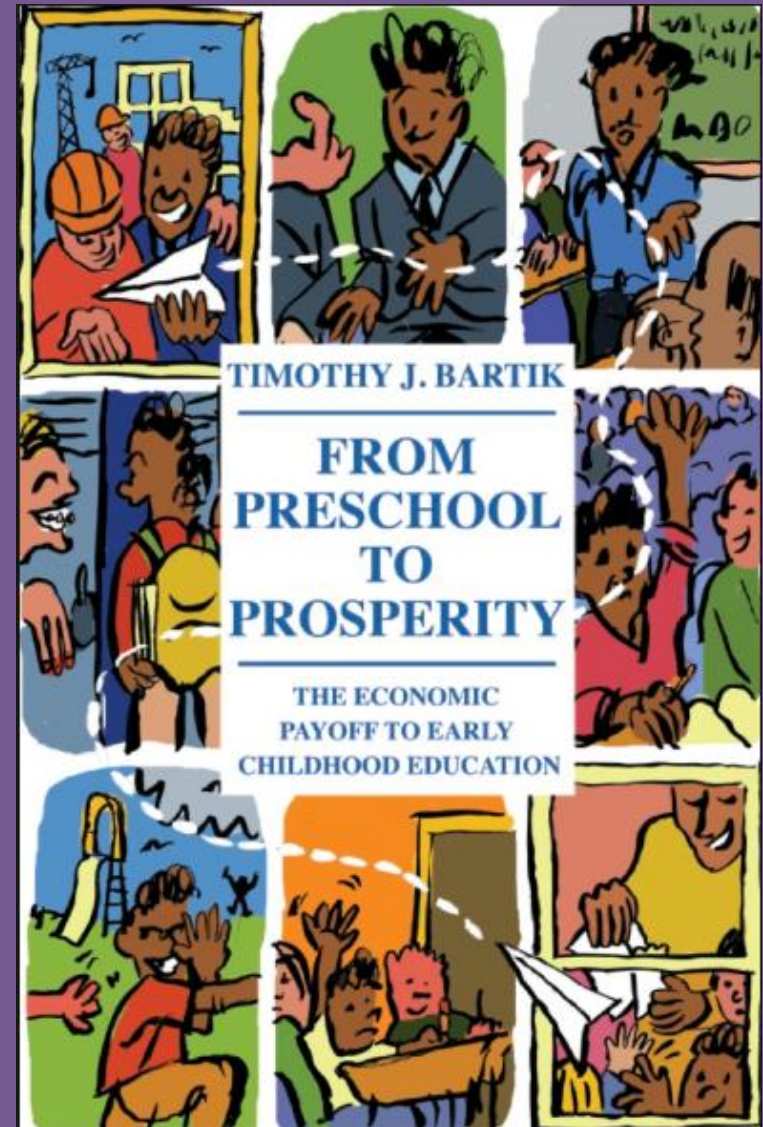
Communities



Communities



High-quality early care and education may be the single most important factor for community thriving and prosperity



What it takes





QUALITY

What it TAKES...

*Provisions that
increase the likelihood
that children
experience **SERVE
AND RETURN.***

Our local, state, and national prosperity of the future rest on the care and education of young children today

\$\$\$
\$\$\$



\$\$\$
\$\$\$
\$\$\$
\$\$\$
\$\$\$

Promising Directions...





Step Up to
Quality



Sixpence



Rooted in Relationships
nebraskachildren



NEBRASKA
Head Start
ASSOCIATION



Communities for Kids
nebraskachildren



EDUCARE





Kate Gallagher
kgallagher@nebraska.edu