

A Day in the Life of Early Care and Education



Welcome!

Designing Quality Early Care and Education Environments



Debora Wisneski, PhD
University of Nebraska
at Omaha



Ed Buglewicz, AIA
RDG Planning & Design



Who is in the Audience?

10

10

10

10

10

10

10

1. Home-based Provider
2. Center-based Provider
3. Teacher
4. School District
5. City Chamber / Official
6. College / University
7. Other



A Day in the Life of Early Care and Education

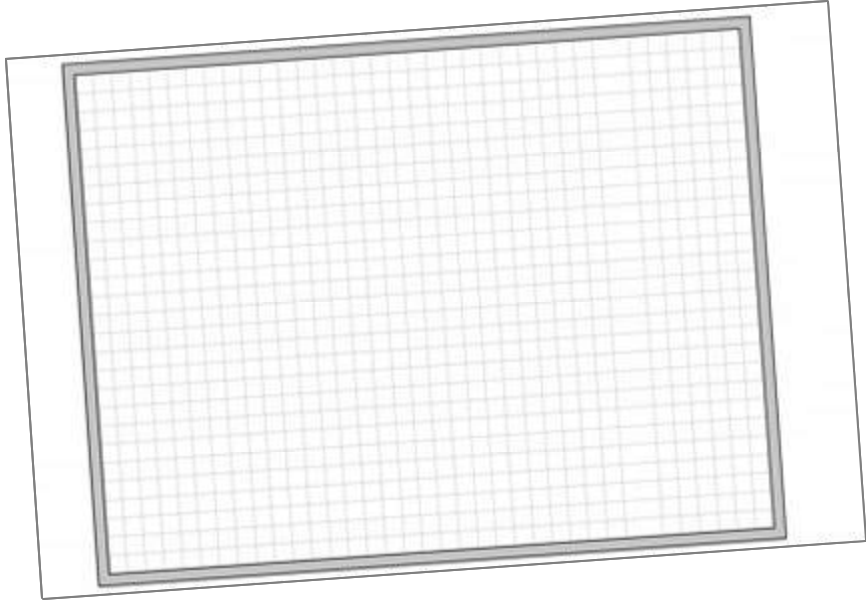
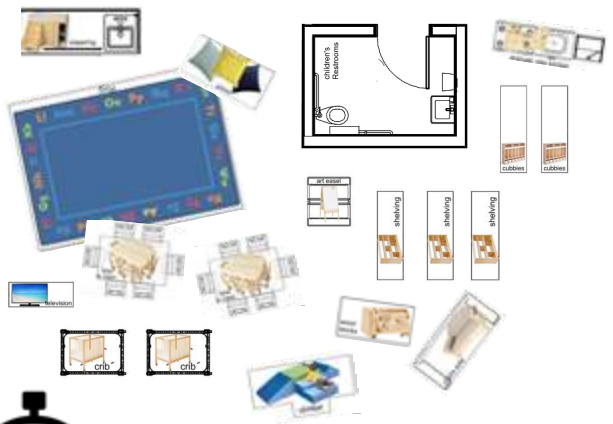
Designing Quality Early Care and Education Environments

- Agenda & Goals



Table Activity – let's play and learn together

- Working together create a layout of a classroom
- 8 minutes



Which classroom provides a balance of stimulation for engagement?

1.

10

2.

10

3.

10

4.

10



A Day in the Life of ECE

- Planning and Preparing before the children arrive

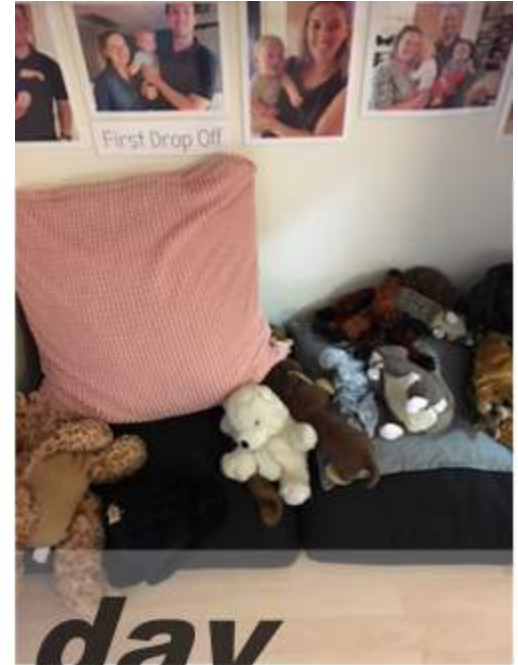


Preparing the day



A Day in the Life of ECE

- Welcoming the Children with their Family Member



Welcoming the day



A Day in the Life of ECE

- Circle Time and Whole Group Activities



Activities & Interest



A Day in the Life of ECE

- Small group activities at interest areas



Activities & Interest



A Day in the Life of ECE

- Small group activities at interest areas



Activities & Interest



A Day in the Life of ECE

- “Messy” Areas



Activities & Interest



A Day in the Life of ECE



Language & Literacy



A Day in the Life of ECE

- Child / Teacher



Interactions



A Day in the Life of ECE

- Child / Child



Interactions



A Day in the Life of ECE

- Snacks
- Meals
- Toileting
- Naptime



Daily Living Routines



A Day in the Life of ECE

- Snacks
- Meals
- Toileting
- Naptime



Daily Living Routines



A Day in the Life of ECE

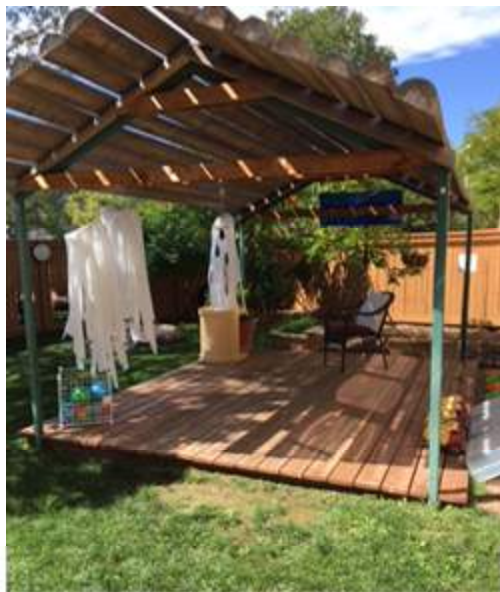
- Snacks
- Meals
- Toileting
- Naptime



Daily Living Routines



A Day in the Life of ECE



Outdoor Play



A Day in the Life of ECE



Outdoor Play



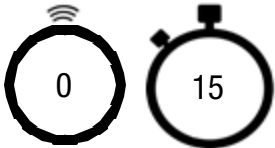
How much outdoor time should a program schedule?

10

10

10

1. Twice a day, weather permitting.
2. Daily for 30 minutes, weather permitting.
3. Twice a week, weather permitting.



A Day in the Life of ECE



Outdoor Play



A Day in the Life of ECE

- Community/Group
Hallway Space



ECE Program Quality Metrics

- Protection of Health & Safety
- Chances to build positive relationships
- Opportunities for stimulating and learning from experiences



ECE Program Quality Metrics

- Building Codes & Fire/Life Safety Codes
- DHSS Licensing – Title 391

Home & Center based programs

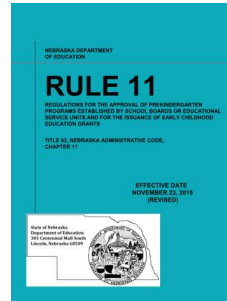
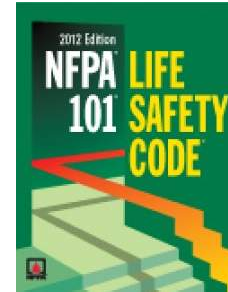
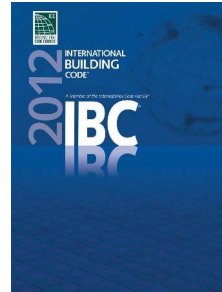
http://dhhs.ne.gov/Pages/reg_t391.aspx

- Rule 11

NDE – Nebraska Dept. Education

<https://www.education.ne.gov/oec/early-learning-guidelines/>

Regulations for approval of PreK programs established by School Boards and ESUs



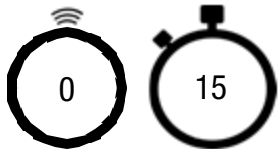
What is an appropriately sized classroom?

10

10

10

10

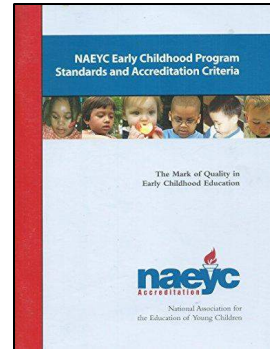
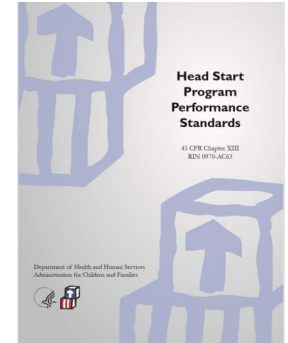
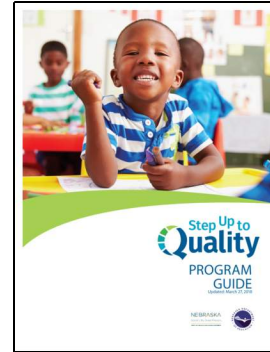


1. 30 Sq Ft per Child
2. 35 Sq Ft per Child
3. 45 Sq Ft per Child
4. 50 Sq Ft per Child



ECE Program Quality Metrics

- Step Up to Quality
Quality Rating and Improvement System (QRIS)
<https://www.education.ne.gov/StepUpToQuality/>
- Head Start
<https://eclkc.ohs.acf.hhs.gov/policy/45-cfr-chap-xiii>
- National Association for the Education of Young Children (NAEYC)
<https://www.naeyc.org/accreditation/early-learning/process>
- Nebraska Early Learning Guidelines
<https://www.education.ne.gov/oec/early-learning-guidelines/>



ECE Program Quality Metrics

- **ITERS/ECERS/FCERS**

<https://ers.fpg.unc.edu/>

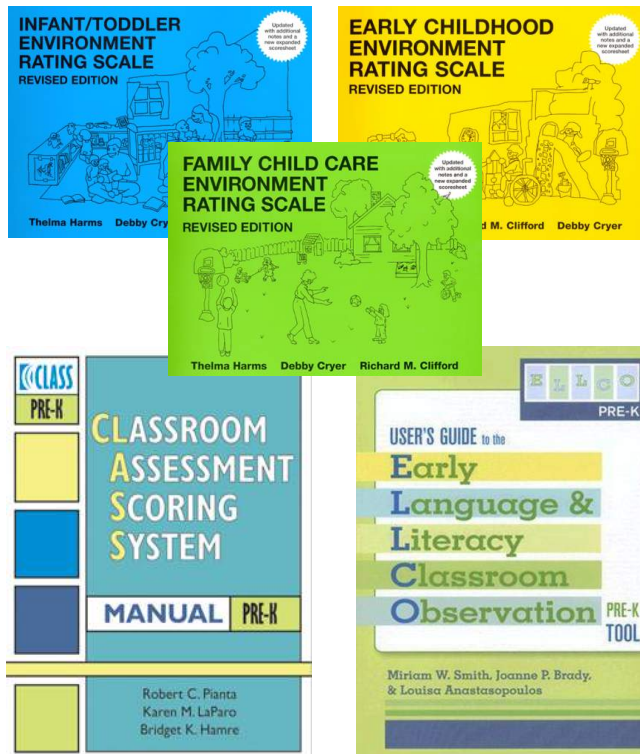
- **CLASS & ELLCO**

<https://teachstone.com/class/>

- **Assessment of process quality**

- Interactions in the early education environment between
 - staff and children, parents & staff
 - the children themselves
 - the children and their environment

- **Assessed through observations**



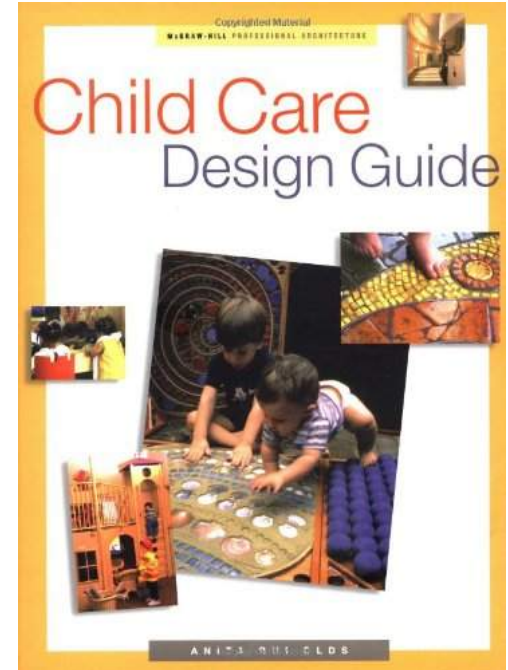
Attend the needs of the child

Environments for very young children should be purposefully designed to give comfort and security, and instill confidence that supports exploration and learning.

Security is fostered in the early learning environment when attention is provided to a child's four basic needs:

- Movement
- Comfort
- Competence
- Control

Anita Rui Olds



opportunities within the environment for a child to move about with no restrictions



providing a balance to stimulation that promotes interaction



a place for a child to feel orientated and comfortable

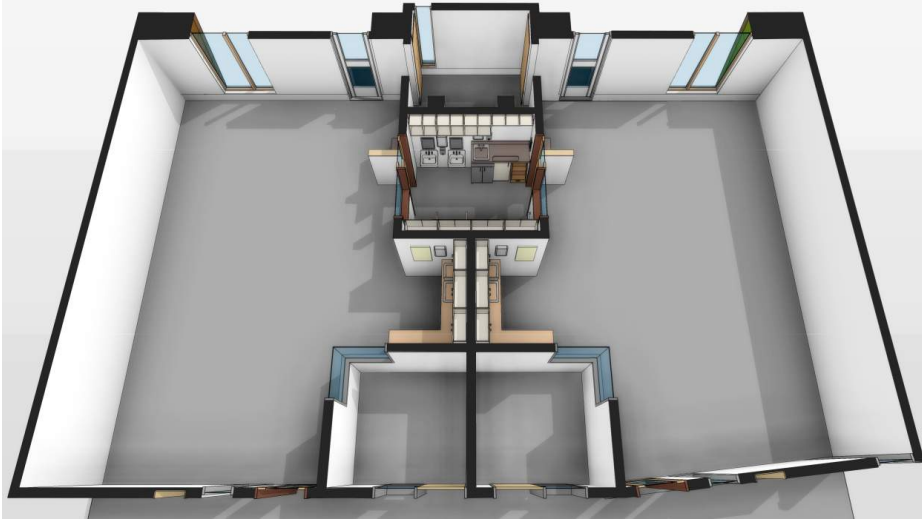


a variety of accessible events that a child can successfully complete



Classroom Principles

Classroom Plan-Section



Supervision of room / children

- Transparency
- Open plan, no hidden corners

Flexibility & Adaptability

Scale

Social connections

- between paired classrooms
- within classroom neighborhood

Shared services



Furniture & Furnishing

- Scaled to child level and size
- Age appropriate
- Adult Comfort for Engagement



Furniture & Furnishing

- Cozy child spaces



Classroom Finishes

- Comfort
- Durability & Maintenance



Classroom Design – Views & Daylight

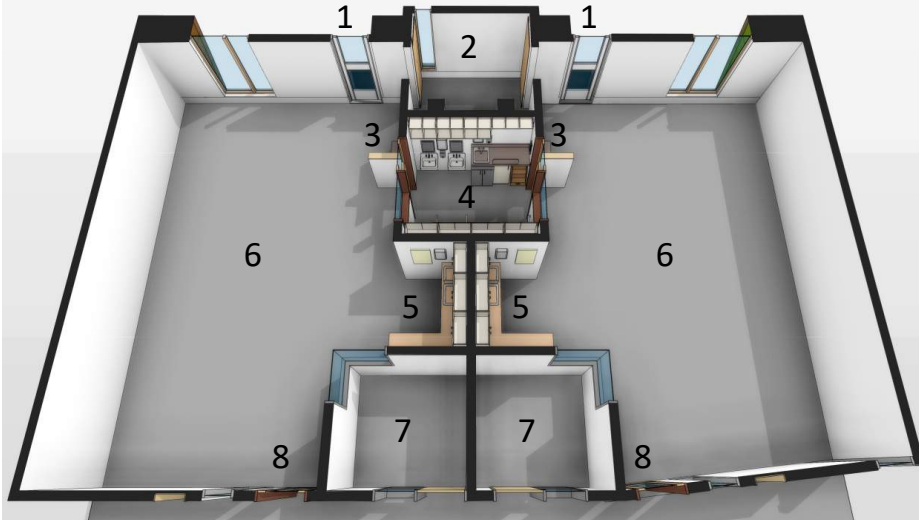


Classroom Design – Views & Daylight



Classroom Design

Classroom Plan-Section



Classroom Design - Plan

- 1- Exit to Outdoor Learning
- 2- Art Room
- 3- Child Wash Area
- 4- Child Restroom
- 5- Food Prep
- 6- Classroom
- 7- Observation
- 8- Exit to Active Hallway



Classroom Design



Classroom Design – Partial height walls



Classroom Design – Full height walls

Classroom Design – half height walls

Shared
diapering /RR

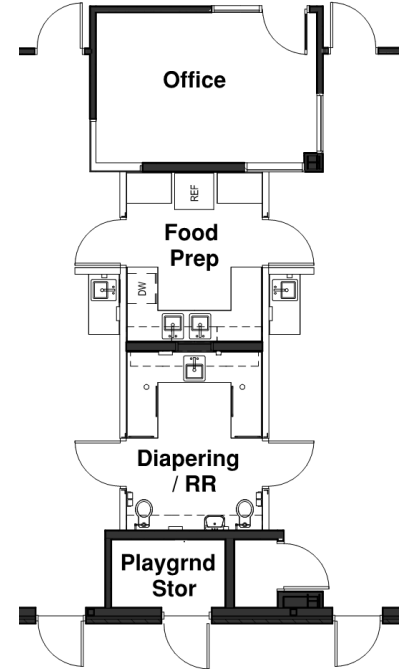
Shared
food prep



Shared food prep



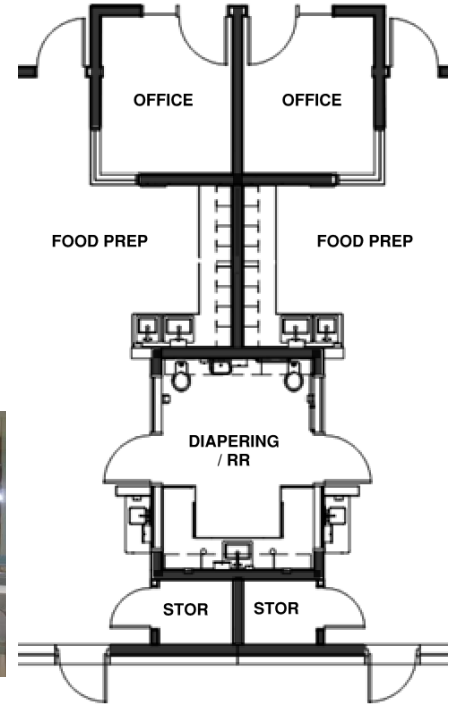
Shared diapering /RR



Classroom Design – full height walls

Separate food prep

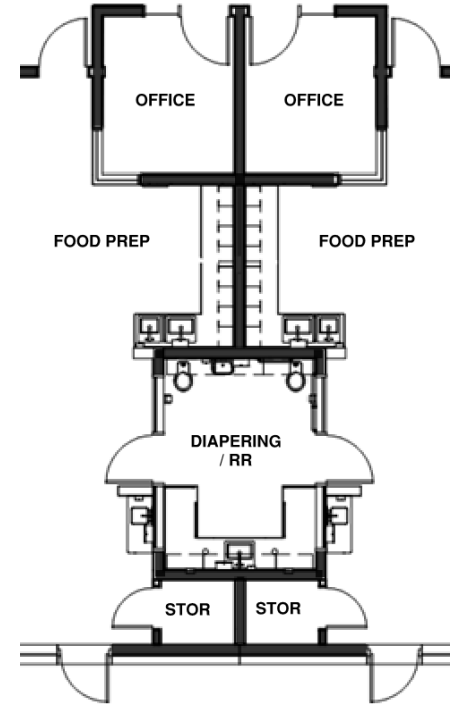
Shared diapering /RR



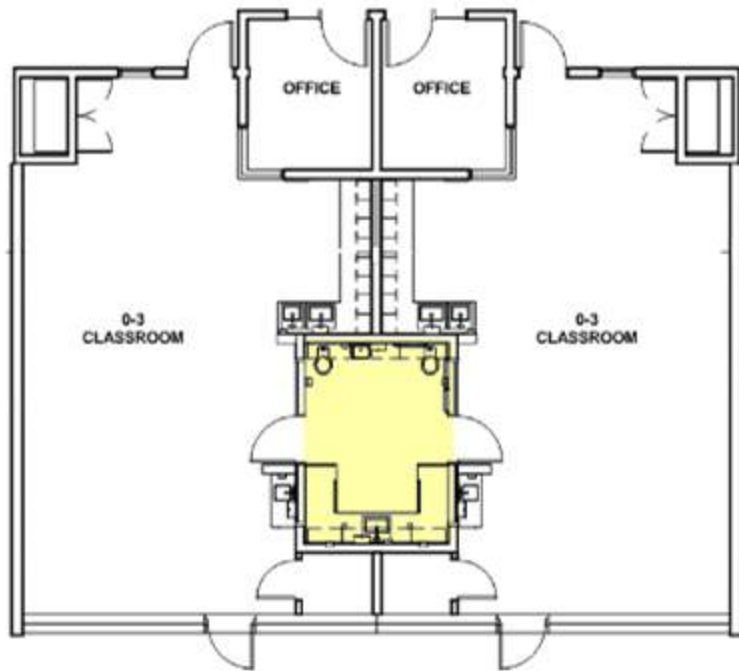
Classroom Design – mix full & half

Shared
diapering /RR

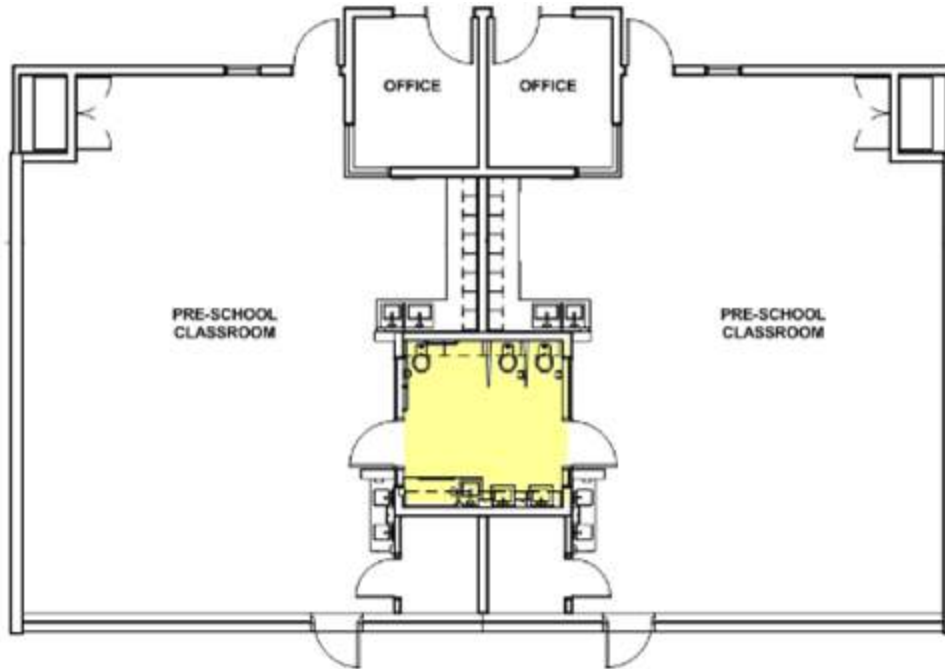
Separate
food prep



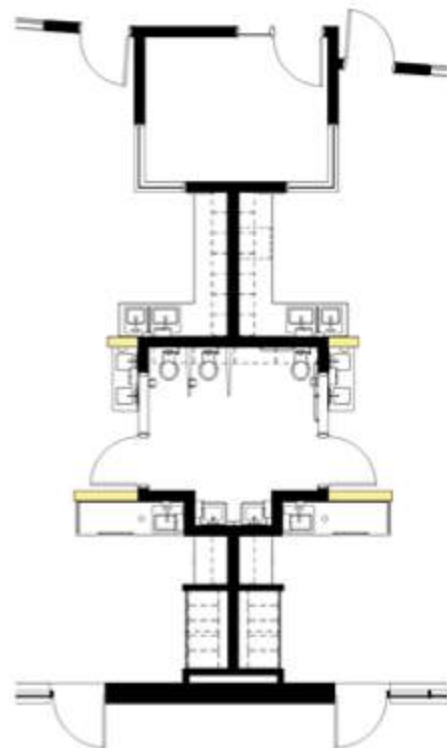
Infant/Toddler – diapering/RR



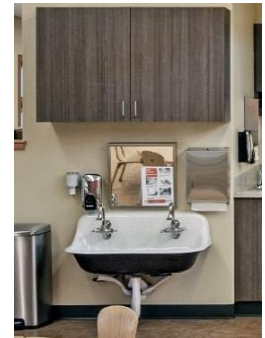
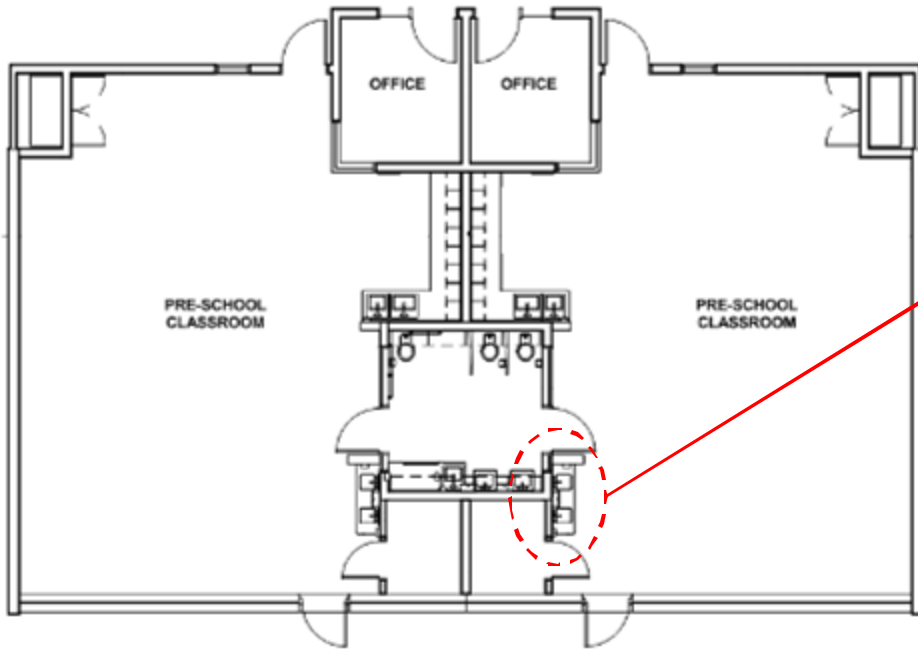
Preschool – diapering/RR



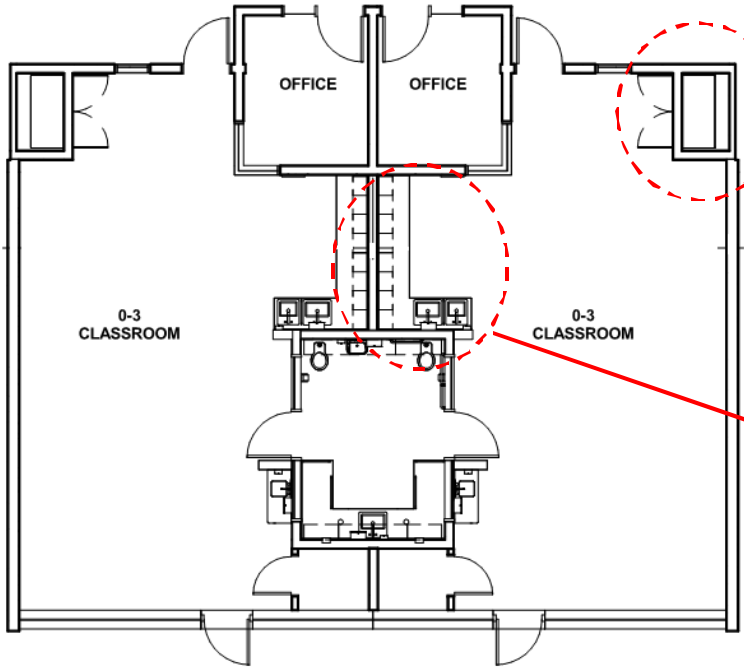
Classroom – diapering within room



Classroom child sinks



Storage



Outside the Classroom



- Classroom Design - Plan**
- 1- Exit to Outdoor Learning
 - 2- Art Room
 - 3- Child Wash Area
 - 4- Child Restroom
 - 5- Food Prep
 - 6- Classroom
 - 7- Observation
 - 8- Exit to Active Hallway



Outside the Classroom

Designing environments with subtle reminders that the world of a child is different



Outside the Classroom



Learning Outside



Learning Outside



Open space for large motor activities



Music



Art



Dramatic Play



Water play



Learning Outside



Tactile Play



Accessible Play



Provide Shade and fall surfacing

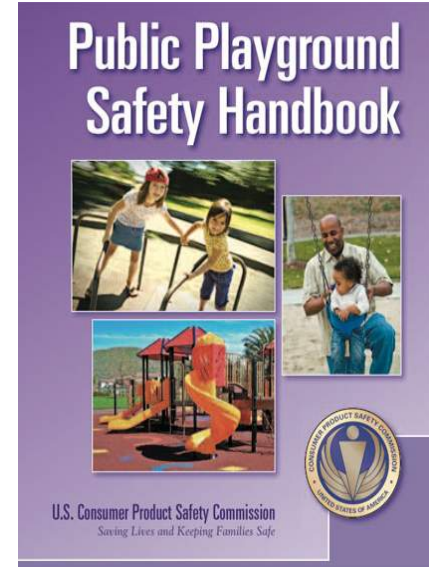


Learning Outside

Playground Safety Guidelines

Elements of Outdoor Design

- Combination of traditional structures and Living Landscapes
- Loose Parts
- Age appropriate
- Sun safety
- Maintenance



A Day in the Life of Early Care and Education

Early Care and Education is the foundation on which successful lives and communities are built.

