

Nebraskans Speak About the Early Care and Education Workforce

October 2016

Purpose



1. Understand Nebraskans' attitudes, beliefs, and knowledge about early childhood care and education.
2. Inform our investment in early care and education.
3. Explore attitudes about the state's support for young children at greatest risk.

Main Report Findings

Long-Term Impact

68%

of Nebraska residents say early care and education has a lot of impact on the long-term success of students in school and in life.

Affordability and Availability



Only 6% of
Nebraskans

strongly agree that high-quality early care and education is **affordable** for every family in Nebraska.

Just 11 % of residents strongly agree that high-quality early care and education is **available**.

Quality



Just 15% of
Nebraskans

are very satisfied with the quality of early childhood care and education programs in the city or area where they live, while 31% are satisfied.

High Priority



Two-thirds of Nebraska residents

strongly agree or agree that the state should make early care and education a higher priority than it is today.

Low-Income Children



The majority of Nebraskans

agree that the state should provide early care and education for all children from low-income families who choose to use it.

Main Report Takeaways



1. Early care and education is important to Nebraskans.
2. More affordable and available high-quality child care is needed.
3. Nebraskans believe the state should invest more in early care and education.
4. Nebraskans voice strong support for children in greatest need.

Workforce Report Findings



Research Questions



1. What are Nebraskans' perspectives about early care and education professionals?
2. What are Nebraskans' beliefs about appropriate levels of education for early care and education professionals?
3. What do Nebraskans say about the level of salary and support for early care and education professionals?

Value the Workforce

66%

of Nebraskans say an early care and education center or home-based center are best when families cannot care for their children during the day.

Value the Workforce

77%

of early childhood teachers and caregivers would recommend a career in the early childhood field to a family member or friend.

Postsecondary Education



At least half of Nebraskans

believe that at least some postsecondary education is needed to be a teacher or caregiver for children from birth through age 5.

Support for Workforce

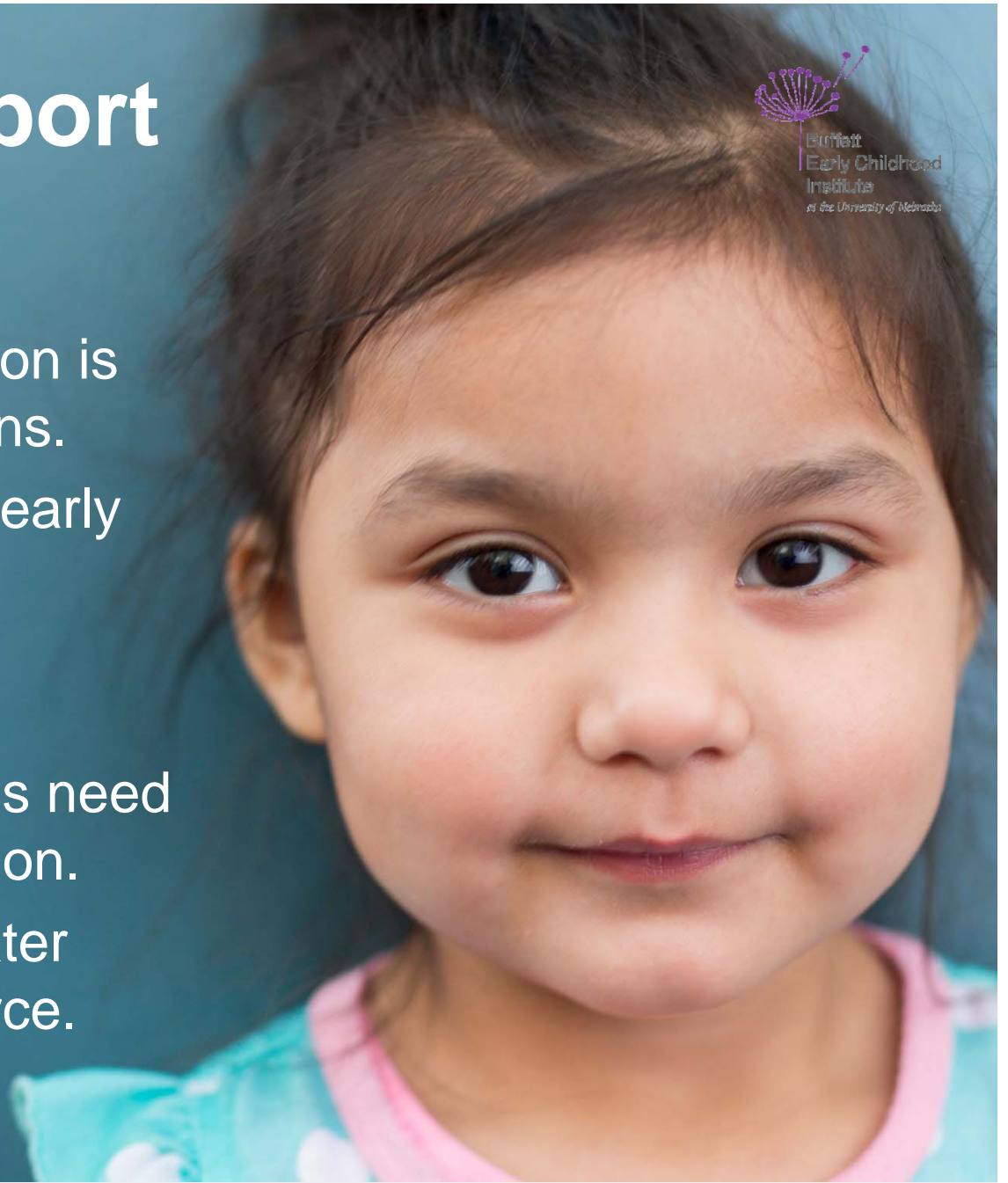
55%

of parents with children in early care and education centers say teachers and caregivers are paid too little.

Workforce Report Takeaways



1. Early care and education is important to Nebraskans.
2. Nebraskans value the early care and education workforce.
3. Nebraskans believe workforce professionals need postsecondary education.
4. Nebraskans want greater support for the workforce.





Buffett Early Childhood Institute
402.554.2924
buffettinstitute.nebraska.edu

Nebraskans Speak About the Early Care and Education Workforce

October 2016